

Made
in the
Shade
Have Your Clients
Running for Shelter

Pergolas, pavilions, gazebos and the like are very often a part of a custom outdoor installation and many times, landscape contractors have to sub that work out. Learning more about shade structures can be the first step in keeping these parts of the projects in-house.



Introduced a year ago, **Infinity Canopies** are a modular system consisting of individual five-foot by two-foot shade panels that connect together. This way, they can be configured to fit any space, easily modified in size, color, design and style, and simply removed for cleaning, storing, and replacement when damaged. And there is no waiting for a canopy to be fabricated. Installation, though not difficult, benefits from accurate measurements that professionals provide. First a rectangle loop of stainless steel aircraft cable is made between two existing, opposing structures. Aluminum frame profiles are attached to parallel sides of this cable rectangle. The Phifertex or Sunbrella panels are then slid into channels in the profiles. infinitycanopy.com

Incredibly Easy.
Famously Reliable.



Permaloc's landscape edgings, with our patented, interlocking connection system, are proven to outperform every other edging in the landscape industry.

If you are looking to save labor, reduce callbacks, and increase your bottom line, then Permaloc is the obvious edging choice.

Connect with Permaloc:



Learn how Permaloc outperforms all other brands of edging:

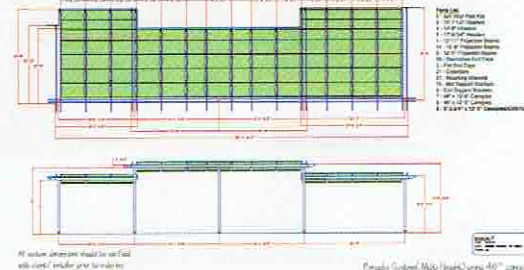
800.356.9660
permaloc.com

permaloc
SUSTAINABLE EDGING SOLUTIONS

Information Request # 458



Fifthroom, which supplies custom-designed kits for pergolas, gazebos, ramadas, pavilions and more, is looking for contractors to join their free Professional Partner Program. Members receive discounted pricing, preferred lead times on products, commissions on all products purchased directly from Fifthroom.com, referrals to local installation jobs, and access to the manufacturer's design, engineering and logistics department. fifthroom.com



Offering free design services complete with CAD drawings for challenging projects, **ShadeTree® Canopies** is a source for retractable canopies and track kits, or complete aluminum or vinyl structure kits with canopies. Their system includes a patented wind release feature that allows unattended canopies to move freely in the tracks during high winds to prevent damage. shadetreecanopies.com